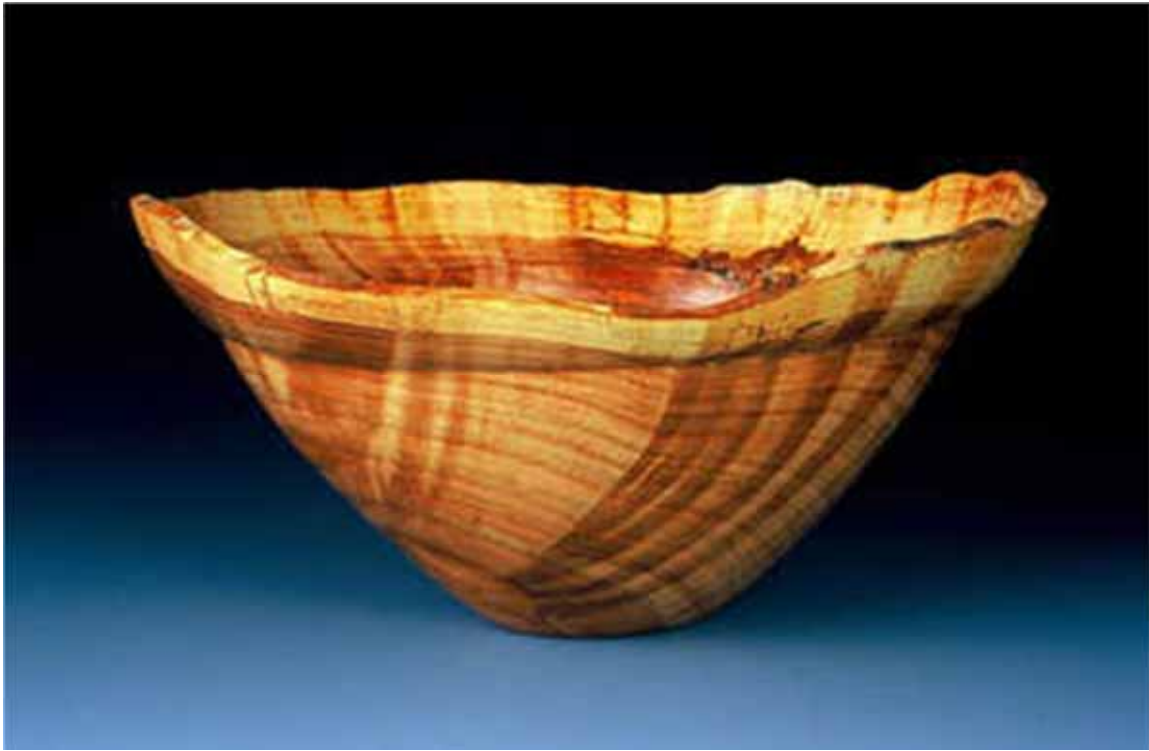


# Knotty Tree



Look into the woods, about 10 yards at the large tree. Notice all of the rough bundles and burls up and down the trunk of the tree. Each of these bundles tells us a story about this tree. Some of the bundles are formed because of a injury to the tree, such as a broken branch, or perhaps an invasion of a damaging beetle. In both cases the tree has overproduced cells to protect itself from these events. Other bundles develop as the tree learns to compensate for weight stresses on the trunk or branch. In a sense its like that old saying, whatever doesn't kill you only makes you stronger! Woodworkers values these forms when "turning" the wood to make ornate bowls, boxes and plaques.